



*High Quality! High Technology! Best Company of Mold!*

It creates the value of top **WOORI M-Tech co., Ltd**

# ***WOORI M-TECH***



**주|우리엠텍**  
Woori M-Tech Co.,Ltd

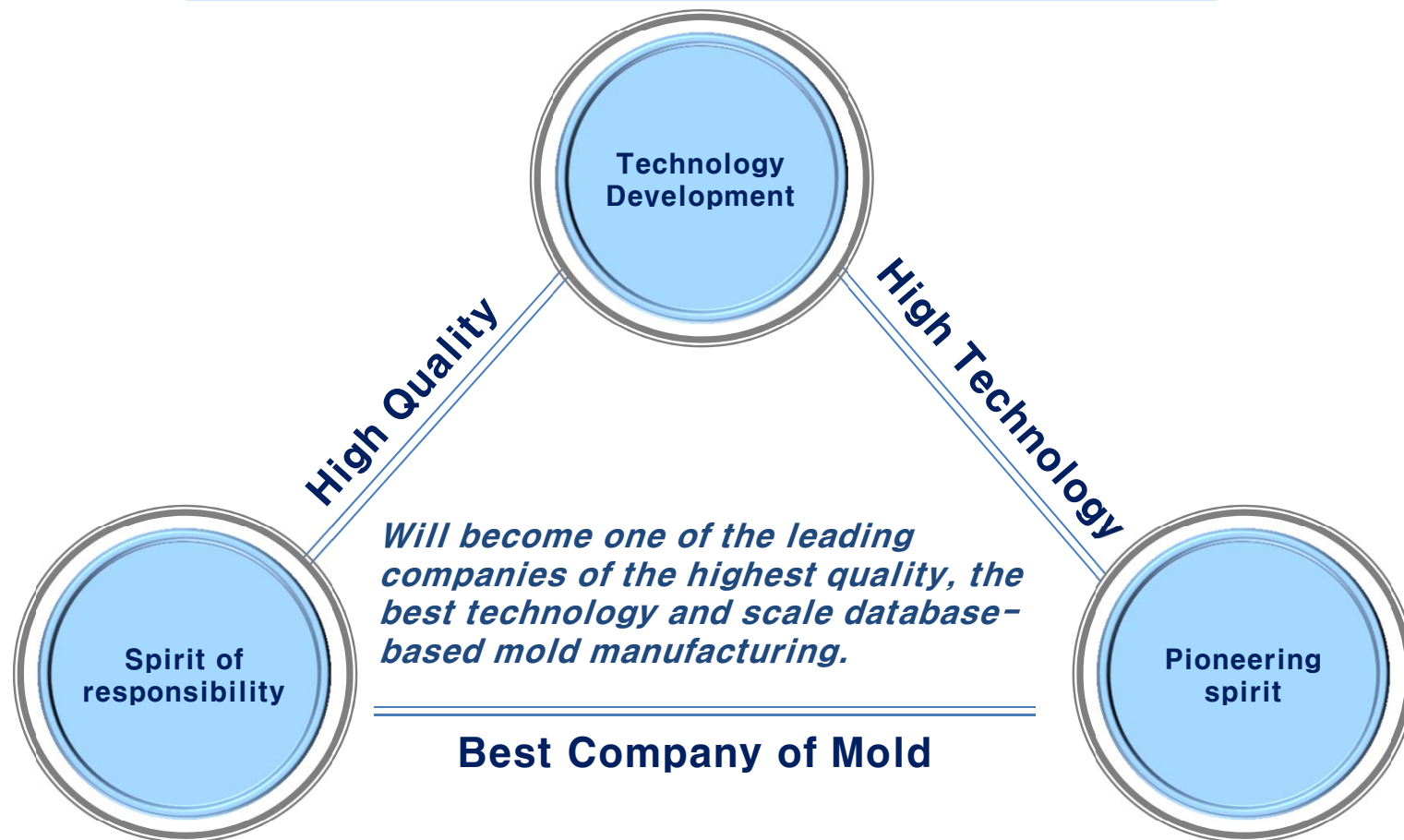
*21-5, Dukwoogongdan 2-gil, Bongdam-up,  
Hwaseong-si, Gyeonggi-do, KOREA  
TEL 82-31-278-2088 / FAX 82-31-278-2084, 5  
[www.woorimold.co.kr](http://www.woorimold.co.kr)*

It creates the value of top **WOORI M-Tech co., Ltd**



## Management Philosophy

Toward high-quality incessant technology development



Boundless confidence based on a spirit of responsibility

Does not stop a pioneering spirit towards the unknown

It creates the value of top WOORI M-Tech co., Ltd

## CORPORATE OVERVIEW



주|우|리|엠|텍  
Woori M-Tech Co.,Ltd



<b>Company Name</b>	WOORI M-Tech co., Ltd.
<b>Founder CEO</b>	Mr. Yeon-Dong, Choi
<b>Address</b>	21-5, Dukwoogongdan 2-gil, Bongdam-up, Hwaseong-si, Gyeonggi-do, KOREA
<b>Established</b>	July 15, 1990
<b>Main Product</b>	Plastic Injection Mold (Precision-Mold, TV LED-Monitor, Home-Appliances, OA-Equipment, Automobile parts etc.)
<b>Contact</b>	TEL, +82-31-278-2088 / FAX, +82-31-278-2084
<b>Home-Page</b>	<a href="http://www.woorimold.co.kr">www.woorimold.co.kr</a>

It creates the value of top **WOORI M-Tech co., Ltd**

# CORPORATE OVERVIEW



**Head Office**



**Hwaseong-si, Gyeonggi-do, KOREA**

Plastic Injection Mold  
(Precision-Mold, TV LED-Monitor, Home Appliances, OA Equipment, Automobile parts etc.)

**Hwaseong Plant**



**Hwaseong-si, Gyeonggi-do, KOREA**

Precision Injection Mold Making

**Gwangju Plant**



**Hanamsandan, Gwangju, KOREA**

Injection Mold Making & Gun-drill Processing

**WooRi Thailand**



**Samuthprakarn, THAILAND**

Injection Mold Making & A/S

**It creates the value of top WOORI M-Tech co., Ltd**



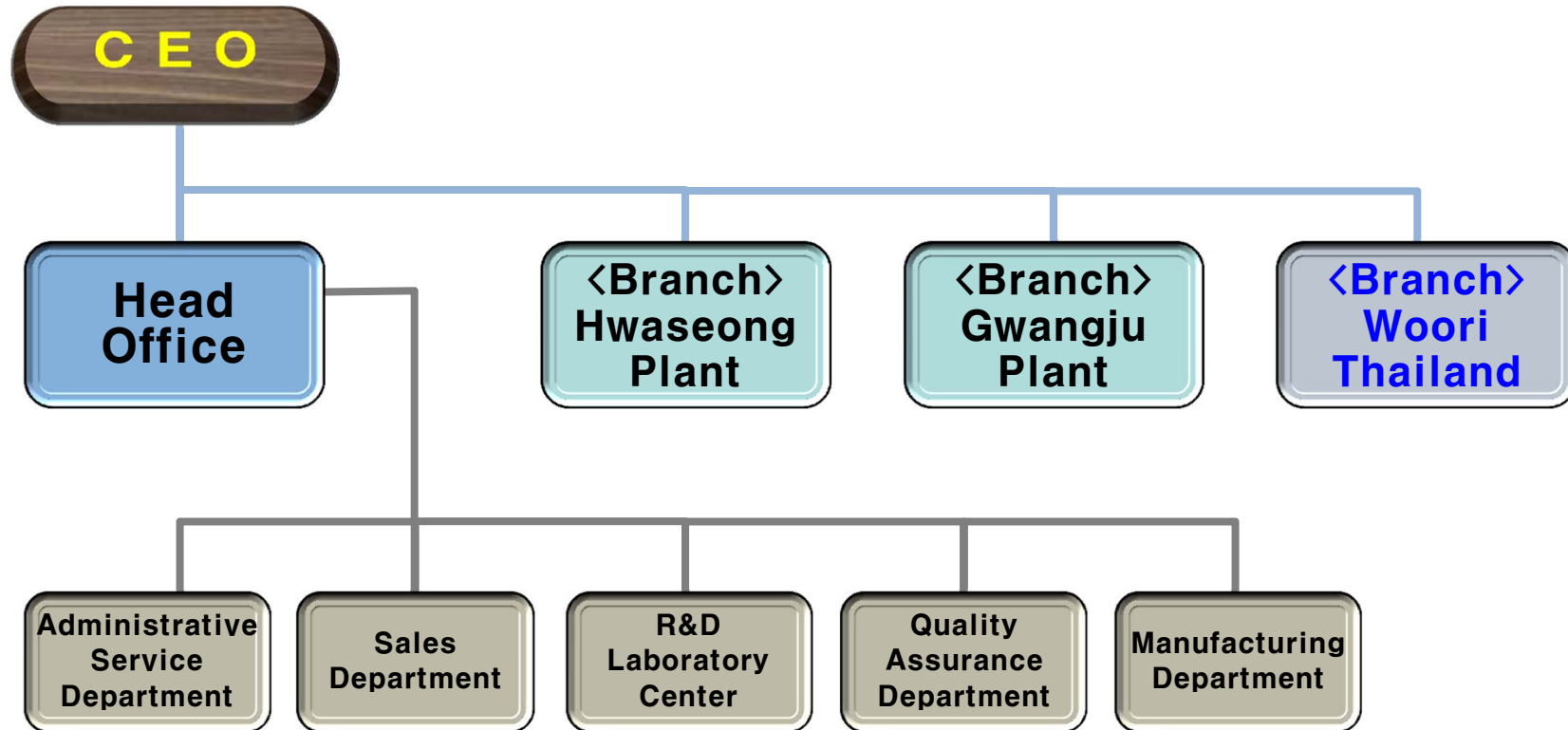
# HISTORY



<b>1990</b>	Jul. Established WOORI Precision co.
<b>2001</b>	Aug. Achieved ISO 9001 Certificate
<b>2002</b>	Apr. Moved for territorial expansion to Uiwang-Si, Gyeonggi-Do
<b>2005</b>	Feb. R&D Lab. Established Jul. Achieved ISO 14001 Certificate Oct. Thailand foreign corporation establishment (Woori Mold Thailand co., Ltd.)
<b>2006</b>	Mar. Moved for territorial expansion to Ansan-Si, Gyeonggi-Do Jun. Achieved ISO/TS 16949 Certificate
<b>2007</b>	Oct. Appointed as a "Military Service Designation Enterprise" Nov. Appointed as a "INNO-BIZ Enterprise"
<b>2008</b>	Oct. Moved for territorial expansion to Hwaseong-Si, Gyeonggi-Do "WOORI M-Tech Co., Ltd."
<b>2009</b>	Sep. Designated as a promising small and medium sized enterprise Nov. Awarded in "500 million expert tower" Dec. Appointed as a "Venture Enterprise"
<b>2010</b>	Oct. Established Gwangju Plant
<b>2011</b>	Nov. Awarded in "1,000 million expert tower" Dec. Achieved "SQ-Mark" from Hyundai Motors
<b>2013</b>	Mar. Established Hwaseong Plant
<b>2014</b>	Jan. Selected as member of "Global Small but Strong"
<b>2015</b>	Jun. Achieved OHSAS 18001 Certificate

It creates the value of top WOORI M-Tech co., Ltd

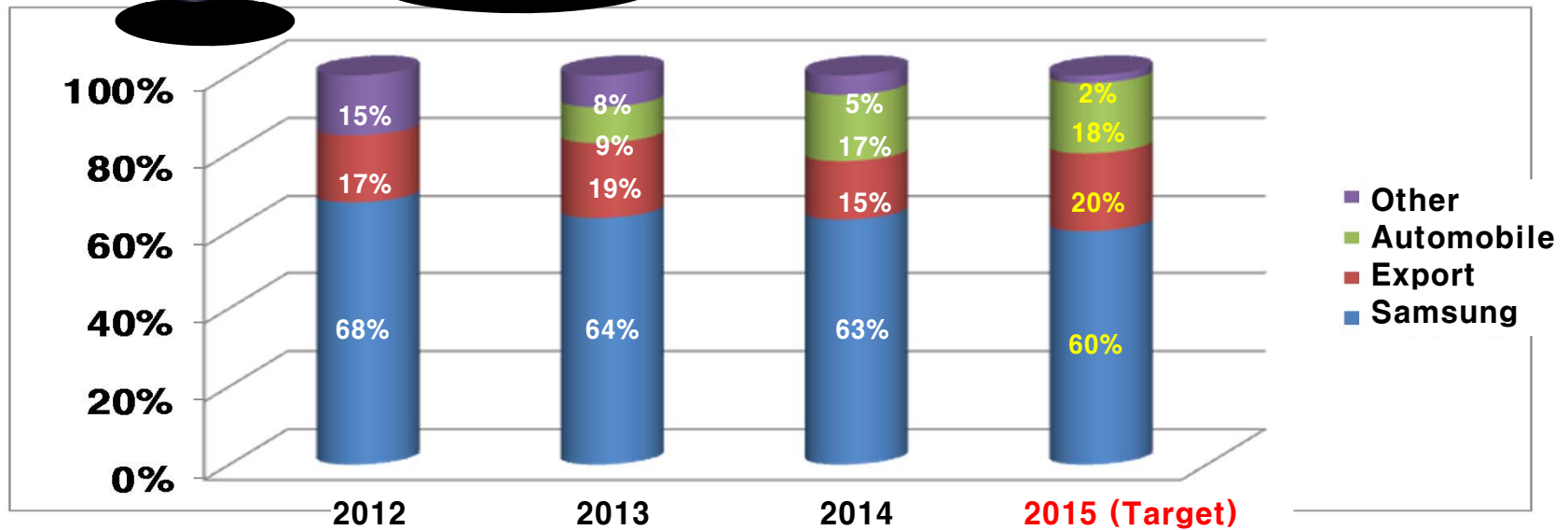
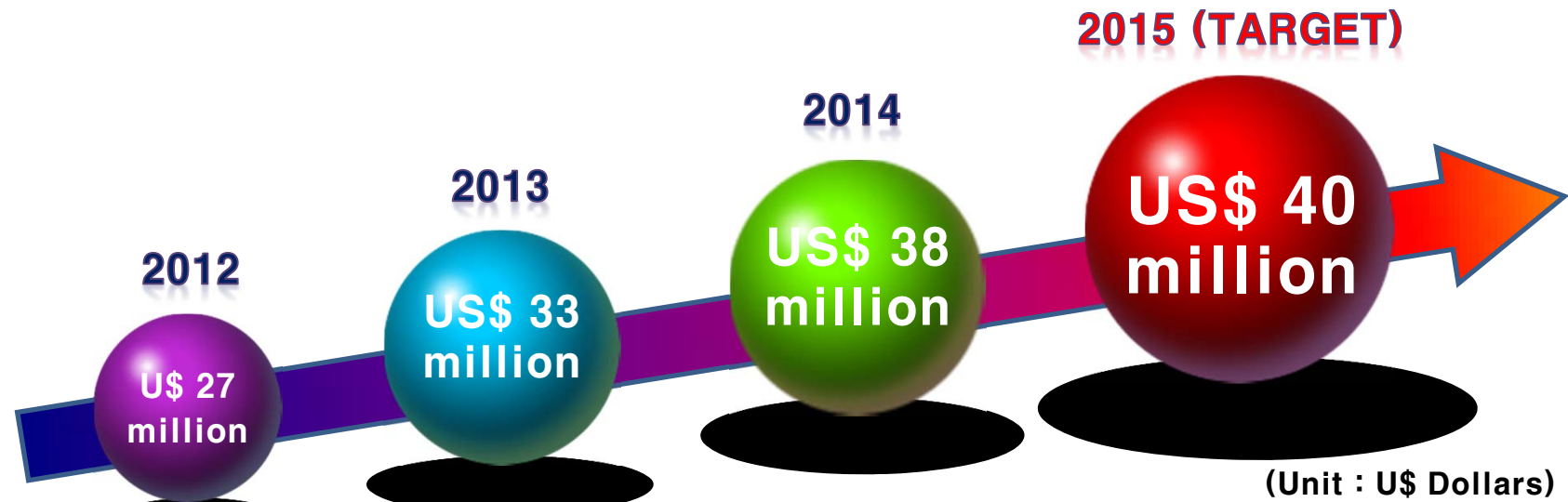
# ORGANIZATIONAL



Number of Employees	Head Office	Branch (Hwaseong Plant)	Branch (Gwangju Plant)	Branch (Woori Thai.)	TOTAL
		95 people	30 people	30 people	30 people

It creates the value of top WOORI M-Tech co., Ltd

## Financial Statements



It creates the value of top **WOORI M-Tech co., Ltd**

# CERTIFICATION



ISO 9001	ISO 14001	TS 16949	OHSAS 18001	SQ-Mark	INNO-BIZ	Venture
2001.08.16	2005.07.28	2006.07.13	2015.06.19	2011.12.28	2007.11.15	2009.12.14
JK-11314	JEK-2258	0134199	OA150031	PLM254	R7061-3980	20110108747
IIC	IIC	NQA (IATF)	CREBIZ	Hyundai · KIA	SMBA	KIBO



**It creates the value of top WOORI M-Tech co., Ltd**

## Technical Development

**Patent (9 case)**

**Utility model Patent (5 case)**

**Program Patent (1 case)**

No. 10-0846108	Molding and ejecting device for 1 <sup>st</sup> molding article using co-injection molding (2008.07.08)
No. 10-0846109	Co-injection molding (2008.07.08)
No. 10-0964896	Injection molding machine enabling disk gate cutting (2010.06.11)
No. 10-1003796	Injection mold for enabling uniform filling in many cavities and injection method using this (2010.12.17)
No. 10-1352534	Injection compression process of plastic glazing for vehicle glass (2014.01.10)
No. 10-1358377	Air-gun apparatus (2014.01.27)
No. 10-1371351	Injection compression process of plastic glazing for vehicle glass (2014.03.03)
No. 10-1409057	Injection compression apparatus of plastic glazing for vehicle glass (2014.06.11)
No. 10-1409117	Injection compression apparatus of plastic glazing for vehicle glass (2014.06.11)
No. 20-0440986	Co-injection molding (2008.07.08)
No. 20-0457288	Vacuum molding die with a built-in gas suction apparatus (2011.12.07)
No. 20-0457398	Gas suction device for vacuum molding die and vacuum molding die including the same (2011.12.12)
No. 20-0457399	Injection molding die (2011.12.12)
No. 20-0461215	Mold for molding comprising cartridge heater (2012.05.18)
2005-01-181-004763	WOORIMOLD(3D Mold Design) (2005.09.06)

**It creates the value of top WOORI M-Tech co., Ltd**



## EQUIPMENTS (R&D)



Class	EQUIPMENTS	Q' ty
CAM	UG-NX (CAM)	8
	MS (Machings Strategist)	9
	NC-Brain	8
	Power-Mill	3
CAD	UG-NX (3D-Design)	41
	Auto-CAD(2007,2002,LT)	21
	CAD-MAX	12
	Power-Shape (Ver. 5.0)	1
	Tc Visualization Standard	10
	Express Foundation	20
CAE	Mold-flow Insight (AMIP)	2
ETC.	Design-Center (EES)	1
	Team-Center	1
	My-Mold ERP (MES/POP)	1

**It creates the value of top WOORI M-Tech co., Ltd**

## **EQUIPMENTS (Manufacturing )**



Class	EQUIPMENTS	Q' ty
CNC	CNC Machine Center	12
	5-AXIS Machine	1
	CNC E.D.M (Makino)	4
	Wire Cutting Machine	5
GER	General Milling Machine	4
	Electric Discharge Machine	2
	Grinding Machine	4
	General Engine LATHE	1
	Drilling Machine (Radial)	2
	Band SAW	1
	Mold Reversing Machine	1
	Die-Sporting Machine	2
INJ	2/C Injection Mold Machine	1
	Injection Mold Machine	6
CMM	CMM (Coordinate Measuring Machine)	3
	OMM (On Machine Measurement)	3

**It creates the value of top WOORI M-Tech co., Ltd**

## Hwaseong Plant (Branch)



<b>Company Name</b>	WOORI M-Tech co., Ltd. (Hwaseong Plant)
<b>Address</b>	1379-19, Seohae-ro, Paltan-myeon, Hwaseong-si, Gyeonggi-do, KOREA
<b>Officer</b>	Lee Gang Young (+82-10-4392-6242)
<b>Business</b>	Precision Injection Mold Making
<b>Area</b>	Land : 2,679 m <sup>2</sup> / Building : 800 m <sup>2</sup>
<b>Contacts</b>	TEL. : +82-31-8047-5263~4 FAX. : +82-31-8047-5265

NO.	DESCRIPTION	Q' ty
1	CNC Machine Center (42,000rpm, 40,000rpm)	5
2	SMART Machine Center	1
3	CNC Electric Discharge Machine	2
4	CMM (Coordinate Measuring Machine)	2
5	Electric Discharge Machine	1
6	Grinding Machine	3
7	General Milling Machine	2
8	General Engine LATHE	1
9	Radial Drill	1

**It creates the value of top WOORI M-Tech co., Ltd**

## Gwangju Plant (Branch)



<b>Company Name</b>	WOORI M-Tech co., Ltd. (Gwangju Plant)
<b>Address</b>	75, Hanamsandan 8beon-ro, Gwangsan-gu, Gwangju, KOREA
<b>Officer</b>	Lee, Sung Ju (+82-10-3329-7251)
<b>Business</b>	Injection Mold Making & Gun-drill Processing
<b>Area</b>	Land : 3,306 m <sup>2</sup> /Building : 1,991 m <sup>2</sup>
<b>Contacts</b>	TEL. : +82-62-955-3088(Rep.) FAX. : +82-62-955-3089



NO.	DESCRIPTION	Q' ty
1	Gun-Drill CNC (1500②,2000①,3000①)	4
2	CNC Machine Center (No.5③,No.8①,No.12①)	5
3	CNC Electric Discharge Machine	2
4	Grinding Machine	1
5	CMM (Coordinate Measuring Machine)	1
6	Radial Drill (1600 Series)	2
7	General Milling Machine (No.1①,No.2①)	2
8	General Engine LATHE	1
9	Electric Discharge Machine	1
10	Injection Mold Machine (850ton)	1

**It creates the value of top WOORI M-Tech co., Ltd**

## WOORI THAI. (Branch)



<b>Company Name</b>	WOORI Mold (Thailand) co., Ltd.
<b>Address</b>	972 Moo 5 Preaksa Rd., Preaksa Mai, Muang Samuthprakarn Samuthprakarn 10280, THAILAND
<b>Officer</b>	Lee, Chan Young(+66-081-862-4770)
<b>Business</b>	Injection Mold Making & A/S
<b>Area</b>	Land : 1,660 m <sup>2</sup> /Building : 1,350 m <sup>2</sup>
<b>Contacts</b>	TEL. : +66-02-324-3373(Rep.) FAX. : +66-02-324-3374

NO.	EQUIPMENTS	Q' ty
1	CNC Machine Center	3
2	Electric Discharge Machine	1
3	CNC Electric Discharge Machine	4
4	General Milling Machine	4
5	Grinding Machine	4
6	General Engine LATHE	2
7	Drilling Machine (Radial)	2
8	Band Saw	1
9	Injection Mold Machine (100,160,250,450)	4

It creates the value of top WOORI M-Tech co., Ltd

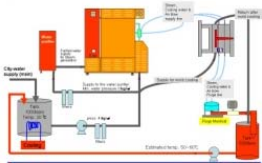
# Quality Improvement Flow



It creates the value of top **WOORI M-Tech co., Ltd**

# Main Core Technology (System)

**High-Polish  
Steam-Mold  
System**



**Coordinate  
Measuring Machine  
Precision  
Measurement  
System &  
On Machine  
Measurement  
System**



**3D-CAD  
Automation  
System**

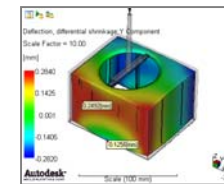
**Full-3D with the  
library UGNX and  
automatically  
designed**



**Steam-Mold  
System**

**CAE  
Injection  
Molding  
Analysis  
System**

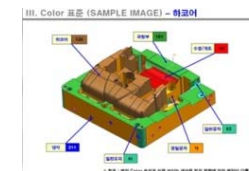
**Injection molding  
according to the  
design before CAE  
analysis, flow  
cooling analysis**



**CMM & OMMS  
System**

**CAM  
Automation  
System**

**MS & NX CAM-  
Automation  
System DB  
Automatic  
Calculation by  
Cutting Pattern**



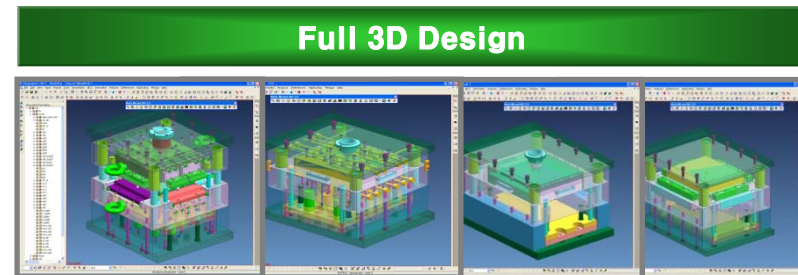
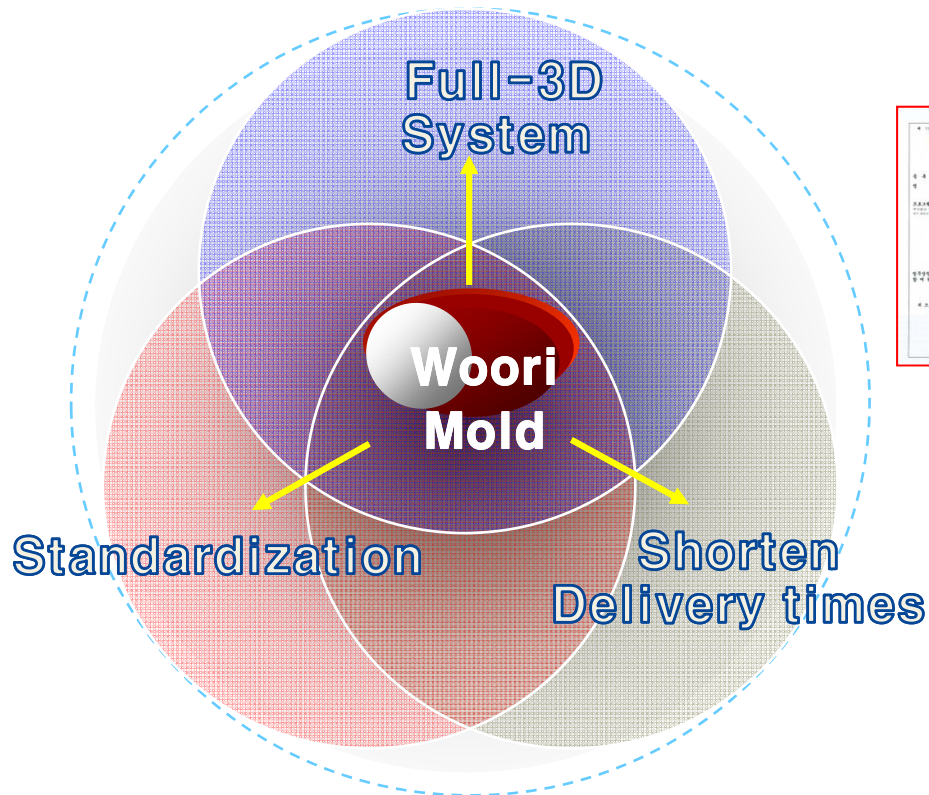


It creates the value of top **WOORI M-Tech co., Ltd**

# Holds the core System

## [ 3D Design Program (Woorimold) ]

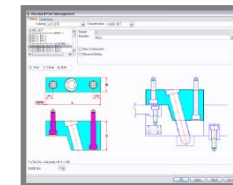
- ▶ Full-3D Design UGNX and Library
- ▶ Reduce design time for mold parts, auto generated before



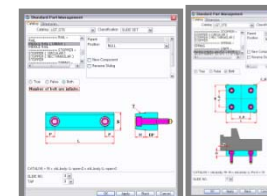
Self-Development  
SOCOP  
Program Enrollment  
(2005-01-181-004763)



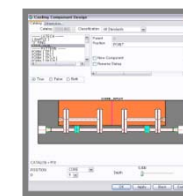
Mold-Base



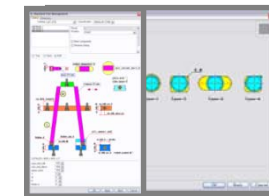
Slid-Core



Others parts



Cooling  
System



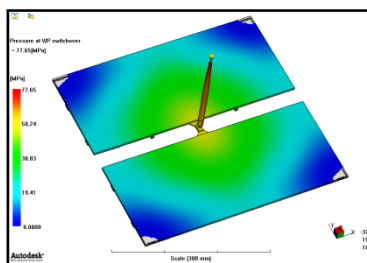
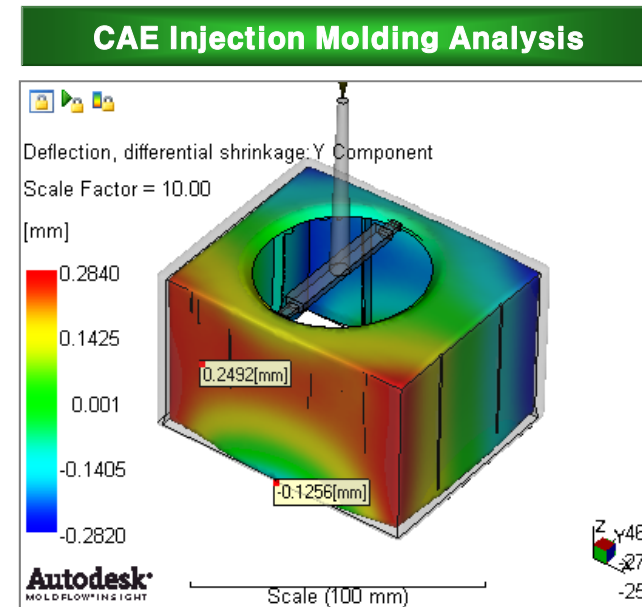
Inclined Core  
& Eject-Pin

It creates the value of top **WOORI M-Tech co., Ltd**

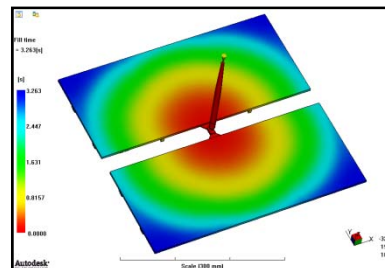
## Holds the core System

### [ CAE Injection Molding Analysis ]

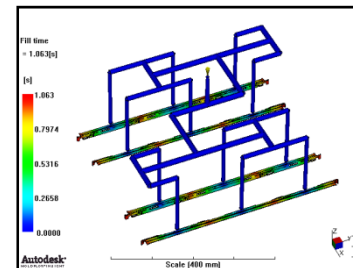
- ▶ Design CAE injection molding analysis
- ▶ CAE injection molding analysis
  - Flow analysis
  - Resin pressure analysis
  - Flexural analysis
  - Cooling analysis
  - Mold rigid interpretation
- ▶ Equipment
  - AMI (Autodesk Moldflow Insight 2012)



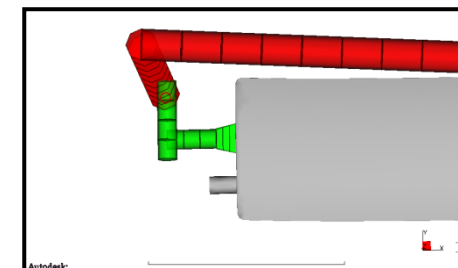
Filling Pressure



Filled Hours



Cooling Line



Gate & Runner

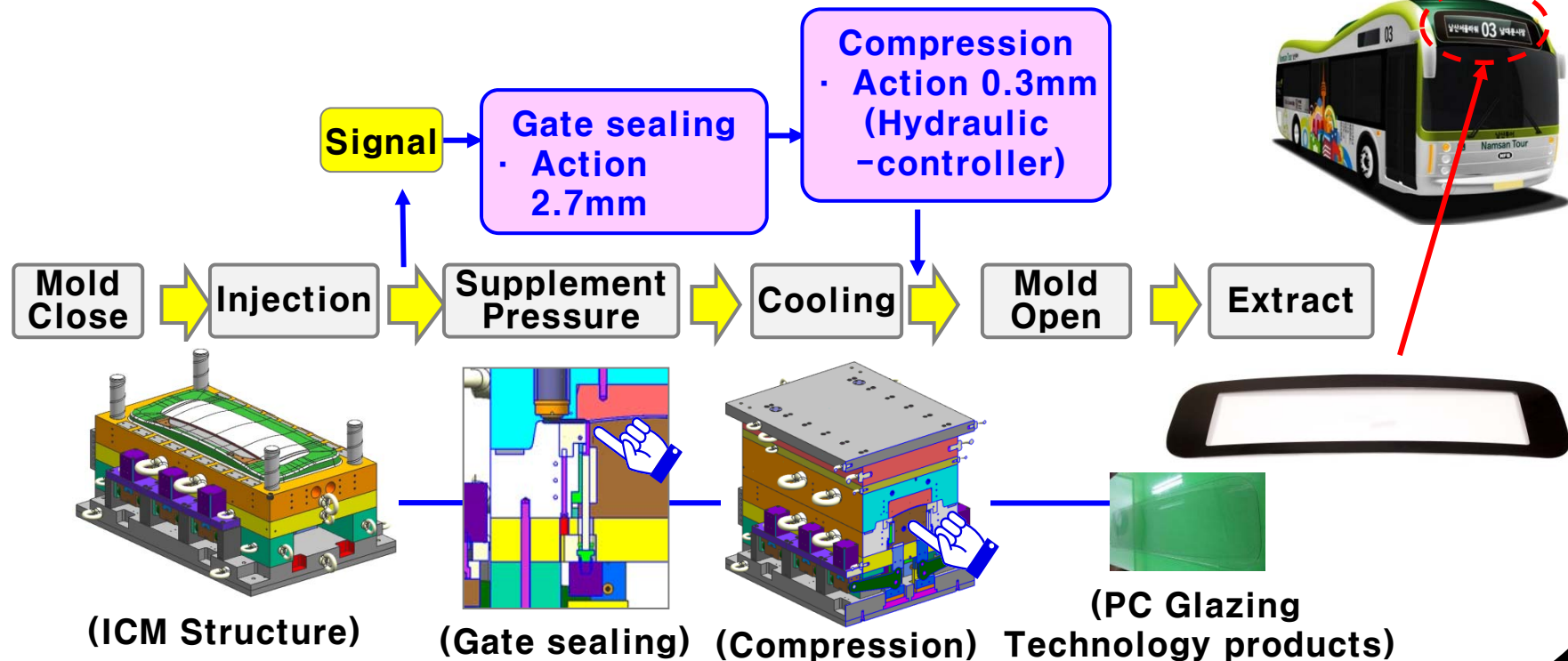
It creates the value of top WOORI M-Tech co., Ltd

## Holds the core technology

(Patent Registration (No. 10-1352534))  
(Patent Registration (No. 10-1371351))

### [ Injection compression technology (PC Glazing) ]

Glass is the window of the car, need to replace with a plastic material (PC) is required. That's why replaced with lightweight plastic, the reduction of air pollution and carbon emissions by weight loss (50%) occurred in the car in a heavy glass can realize.  
(\*Specific Gravity : Glass – 2.4, Plastic – 1.2)



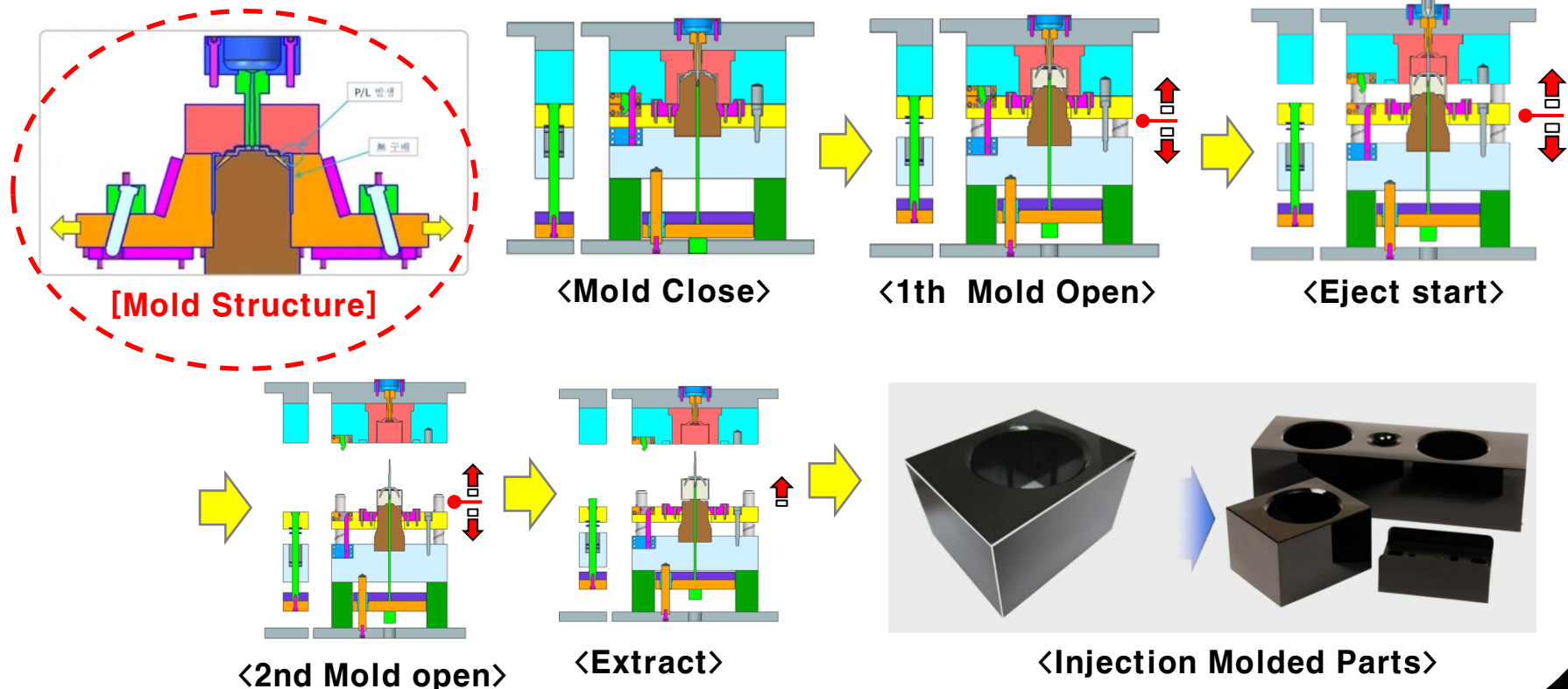
It creates the value of top **WOORI M-Tech co., Ltd**

**Holds the core technology**

## [ NTM Technology ]

(Patent Pending)

Shrinkage of the moldings on the upper side, the niche technology that raises heterozygous  
- Thermal expansion of the material, mold design, new technology, new structure and development, processing technology, test injection



It creates the value of top **WOORI M-Tech co., Ltd**

# MAIN PRODUCT & Partners

**TV  
Monitor**

**SamSung**



**TV, Computer LED Monitor Parts**  
(Front-Cover Parts, Back-Cover Parts, Stand Parts, The Other Parts)

**Automobile  
Parts**

**Hyundai / KIA /  
Japanese car maker**



**Automobile Precision Parts**  
(H/Lamp Housing, Instrument, Console-Box, The Others Parts)

**Home  
Appliances  
& OA**

**SamSung /  
Japanese home  
appliances maker**



**Home Appliances & OA Parts**  
(Remote control, Speaker, Washing Machine, Refrigerator, Facsimile, Walkie Talkie, The Other Parts)

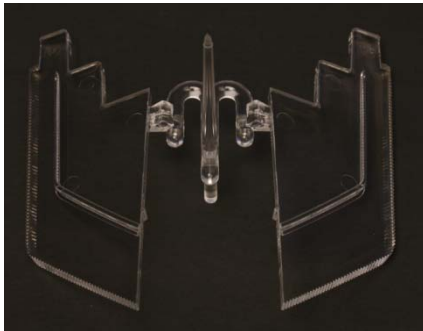


It creates the value of top **WOORI M-Tech co., Ltd**



# MAIN PRODUCT (Automobile)

## LAMP Parts



It creates the value of top **WOORI M-Tech co., Ltd**

**MAIN PRODUCT (Automobile)**

**LAMP Parts**



It creates the value of top **WOORI M-Tech co., Ltd**



# MAIN PRODUCT (Automobile)

## LAMP Parts



HYUNDAI



KIA MOTORS



TOYOTA



HONDA



mazda



SUBARU



ISUZU



mitsubishi  
MOTORS

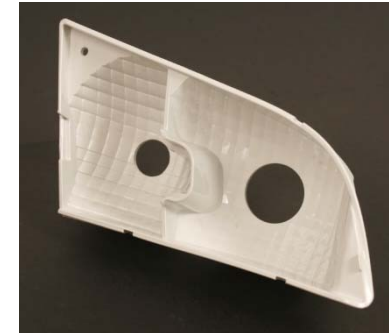


It creates the value of top **WOORI M-Tech co., Ltd**



# MAIN PRODUCT (Automobile)

## LAMP Parts



HYUNDAI



KIA MOTORS



TOYOTA



HONDA



mazda



SUBARU



ISUZU



mitsubishi  
MOTORS

It creates the value of top **WOORI M-Tech co., Ltd**

# MAIN PRODUCT (Automobile)

**The Others  
Parts**



HYUNDAI



KIA MOTORS



TOYOTA



HONDA



MAZDA



NISSAN



SUBARU



ISUZU

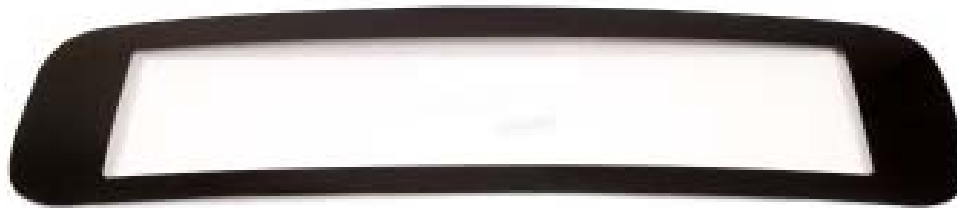


MITSUBISHI  
MOTORS

It creates the value of top **WOORI M-Tech co., Ltd**

## MAIN PRODUCT (Automobile)

The Others  
Parts



HYUNDAI



KIA MOTORS



TOYOTA



HONDA



mazda



SUBARU



ISUZU



mitsubishi  
MOTORS

It creates the value of top WOORI M-Tech co., Ltd



# MAIN PRODUCT (Automobile)

The Others  
Parts

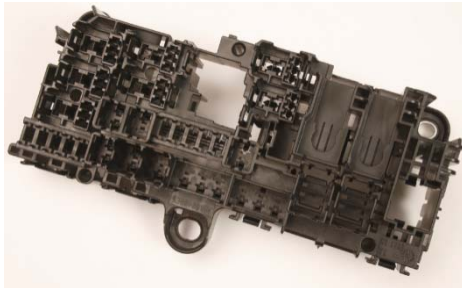


It creates the value of top **WOORI M-Tech co., Ltd**



# MAIN PRODUCT (Automobile)

## The Others Parts



It creates the value of top **WOORI M-Tech co., Ltd**

# LOCATION (Outline Map)

## WOORI M-Tech CONTACT US



★ 變即生 不變即死! (If you do not change your live, die!) ★

That only one unchanging truth in this world.

It does not change the world, it is not called. WOORI M-tech will  
continue to change and are.

Thank you!

It creates the value of top  
WOORI M-Tech



|주|우리엠텍  
Woori M-Tech Co.,Ltd